

产品描述: TR4.8×0.8R 旗形快速接插器

Product Description: TR4.8×0.8R Flag Type Receptacle

目录

INDEX

1. 更改履历 Change History
2. 范围 Scope
3. 产品描述 Product Description
4. 相关标准 Related Standards
5. 参数范围 Parameter Ratings
6. 产品性能 Performance
7. 测试分组 Test Sequences

 浙江合兴电子元件有限公司 CWB Electronics (Zhejiang) Co., Ltd.	<u>制定 Edit:</u> 杨培 2019.01.23	<u>产品名称 Product Name:</u> TR4.8×0.8R
	<u>审核 Check:</u> 王国英 2019.01.23	<u>编号 Document No.:</u> PS3909
中国·浙江省乐清市虹桥镇幸福东路 1098 号 合兴工业园 1098,Xingfu `Road(East),CWB Industrial Zone,Hongqiao,Yueqing,Zhejiang 325608,China Tel: 86-577-61313157 Fax: 86-577-62313682	<u>批准 Approval:</u> 刘冬旭 2019.01.23	<u>版本 REVISION:</u> 3



产品规格书

PRODUCT SPECIFICATION

1.更改履历 Change History

序号 No.:	版本号 Version No.	更改前描述 Description Before Modification	更改后描述 Description After Modification	日期 Date
1	1	/	初版	2016.6.27
2	2	/	更新导线对应的电流和抗张强度	2018/3/26
3	3	/	更改图纸商标 LOGO	2019.01.23
4				
5				
6				
7				

产品名称 Product Name:	TR4.8×0.8R	编号 Document No.	PS3909	版本号 VersionNo.	3
-----------------------	------------	--------------------	--------	-------------------	---

2 适用范围 Scope

本产品规格书适用于浙江合兴电子元件有限公司生产的 TR4.8 系列快速接插器，产品名称：**TR4.8×0.8R**。

This product specification covers the requirements for **Receptacle Terminal**, which is designed and manufactured by CWB Electronics(ZheJiang) Co.,LTD. P/N: **TR4.8×0.8R**.

3.产品描述 Product Description

TR4.8 系列产品为家电连接器产品，产品部件组成如下：

TR4.8 series of products for electrical products, product components are as follows:

Name	Part name	Notes
端子 Flag Type Receptacle	TR4.8×0.8R	Brass, Tin over nickel plating

4.相关标准 Related Standards

以下参考文件是本规格书的一个组成部份。若本规格书中的要求与产品图纸发生冲突，则产品图中的要求为优先；若本规格书中的要求与参考文件中的要求冲突，则本规格书为优先。

The following documents form a part of this specification. In the event of conflict between the requirements of this specification and the product drawing, the product drawing shall take precedence. In the event of conflict between the requirements of this specification and the referenced documents, this specification shall take precedence.

GB/T 2421	电工电子产品环境试验 第一部分 总则 Testing Method for Environmental of Electrical Connectors Class 1: General Principles
GB/T 2423	电工电子产品环境试验方法 Testing Method for Environmental of Electrical Connectors
GB/T 2424	电工电子产品环境试验导则 Testing Method for Environmental of Electrical Connectors
GB/T 5095	电子设备用机电元件基本试验规程及测量方法 Testing procedure/Method for components of electric equipment

产品符合合兴企标 Q/HX J1150001 《产品及其所用材料的环保要求》 I 类或顾客要求。

The connector should comply with CWB standard Q/HX J1150001-2010 Class I or customer's requests.

产品名称 Product Name:	TR4.8×0.8R	编号 Document No.	PS3909	版本号 VersionNo.	3
-----------------------	------------	--------------------	--------	-------------------	---

5. 参数范围 Parameter Ratings:

额定电流 Rated Current	AWG 20# 4A	AWG 18# 7A	AWG 16# 10A
额定电压 Rated Voltage	250V [AC(有效值 rms)/DC]		
使用温度范围 Operating temperature range	-40°C ~ +105°C (Include temperature rise)		
适用线型 Applicable wires	Wire Size: AWG 20~AWG 16 (0.52mm ² - 1.3 mm ²) Insulation Diameter: 1.8mm-2.35mm		

6. 产品性能 Performance

6.1 机械性能 Mechanical

序号 No.	项 目 Item	测试条件 Test Condition	规 格 Requirement			
6.1.1	外观 Appearance	目测 Checking by eye 视力: 1.0 以上 Eyesight: > 1.0 照明: (200~300) lx Lamp: (200~300) lx 目测距离: (0.3~0.5) m Space: (0.3~0.5) m GB/T 5095.1 Method 1a	金属件表面无锈蚀、氧化、无明显的机械损伤等缺陷。 Metal part: bright and even surface without rust, oxide, fog and obvious physical damage, etc.			
6.1.2	插入力与拔出 力 Insertion and Withdrawal Force	固定插片(4.8×0.8)和/或测力计, 在连接器轴线方向插入和拔出; 速度25±3mm/min. Apply Axial insert and withdraw on the tab in the receptacle at a rate of 25±3 mm/ min. GB/T 5095.8 Method 15d / EIA-364-29B	去锁扣 without lock	首次插入力 (First Insertion Force) Max	首次拔出力 (First Withdrawal Force) Min	六次拔出力 (6th Withdrawal Force) Min
				25N	8N	6.5N
			带锁扣 with lock	首次拔出力: 60N Min First Withdrawal Force: 60N Min		
6.1.3	压着部位抗张 强度 Crimping Pull Out Force	在试验装置夹头中固定试验样品, 在连接的轴线方向施加张力, 速度不大于25±3mm/min; Fix the crimped receptacle, Axial pull out force on the receptacle in the wire at a rate less than 25±3 mm/ min. GB/T5095.8 Method 16d / EIA-364-08B	AWG 20#: 57.9N Min. AWG 18#: 89N Min. AWG 16#: 133.5N Min			
产品名称 Product Name:	TR4.8×0.8R	编号 Document No.	PS3909	版本号 VersionNo.	3	



产品规格书

PRODUCT SPECIFICATION

6.2 电气性能 Electrical

序号 No.	项目 Item	测试条件 Test Condition	规格 Requirement
6.2.1	接触电阻 Low Level Contact Resistance	插入4.8×0.8 插片,用小功率电路进行测试 Insert standard tab (4.8×0.8) and measure the contact resistance by dry circuit. GB/T 5095.2 Method 2a / EIA-364-23B	0.03Ω Max. (Initial) 0.06Ω Max (Final)
6.2.2	温升 Temperature Rise	插入4.8×0.8 插片, 通以导线的最大允许电流, 测温度的差值 Mated connectors and measure the temperature rise of contact when the maximum AC rated current is passed. GB/T 5095.3 Method 5a / EIA-364-70A	Δ30°C Max.

6.3 环境性能 Environmental

序号 No.	项目 Item	测试条件 Test Condition	规格 Requirement
6.3.1	恒定湿热 Humidity	温度(40±2)°C,相对湿度(90~95)%, 搁置时间96h, 取出恢复2h 后检查。 Temperature: (40±2)°C Relative Humidity: (90~95)% Duration: 96 h GB/T 5095.6 Method 11c /EIA-364-31B	外观: 无损伤 Appearance: No Damage 接触电阻: 0.06Ω Max LLCR: 0.06Ω Max
6.3.2	温度循环 Temperature Cycling	把试验样品分别放入高、低温试验箱中, 按下列步骤调试温度: a) 在(-55±2)°C的恒温条件下放置0.5h; b) 在(85±2)°C的恒温条件下放置0.5h; 从a)到b)为一个循环周期, 共进行5个循环,恢复1~2h后检查。 Mated connectors shall be tested under the following conditions Temperature °C Duration (Minutes) 1 -55 30 2 +25 5Max. 3 +85 30 4 +25 5Max. Step 1 to 4 is one cycle, 5 cycles shall be tested. Recovery time 1~2 hours. GB/T 5095.6 method 11d / EIA-364-32C	外观: 无损伤 Appearance: No Damage 接触电阻: 0.06Ω Max LLCR: 0.06Ω Max

产品名称 Product Name:	TR4.8×0.8R	编号 Document No.	PS3909	版本号 VersionNo.	3
-----------------------	------------	--------------------	--------	-------------------	---

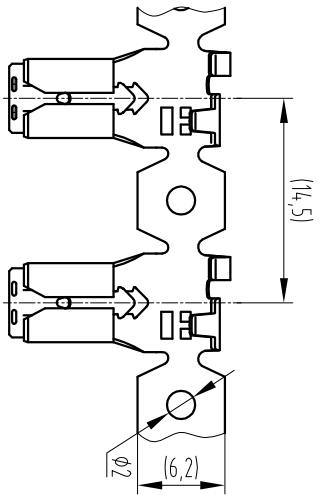
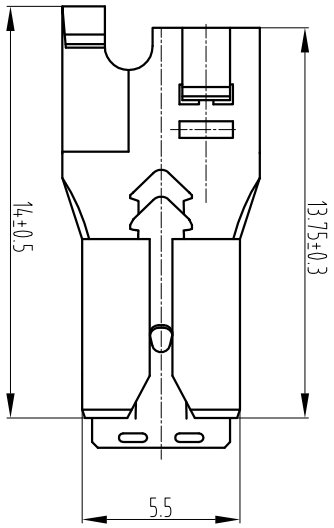
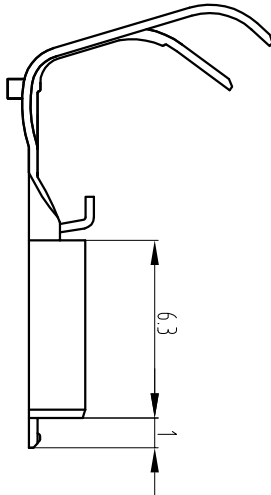
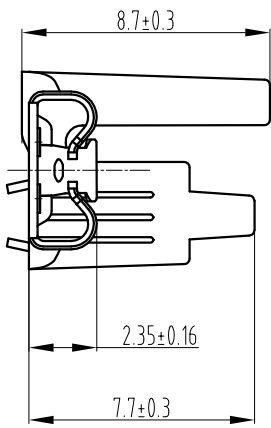
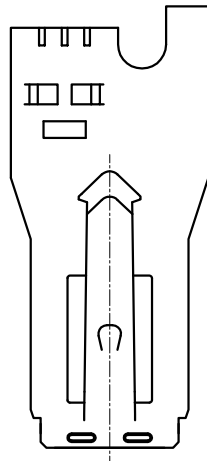
6.3.3	盐雾 Salt Spray	<p>把试验样品从试验箱顶悬挂下来，采用浓度为(5±1)% (质量百分比)的氯化钠溶液，在(35±2)℃温度下连续雾化24h, 试验后用流动的蒸馏水轻轻洗去表面沉积物。在常温常湿条件下恢复1~2h</p> <p>24 hours spray, at temp (35±2)°C, Salt NaCl mist (5±1)% After test wash parts and return to room ambient for 1~2 hours</p> <p>GB/T 5095.6 Method 11f /EIA-364-26B</p>	<p>外观: 无损伤(五金件应无露出底金属的严重锈蚀;使用预镀好的型材, 其落料面允许有不影响其性能的轻微腐蚀。)</p> <p>Appearance: No Damage (No erosion with material exposed. And with plating material, slight erosion on the cutting surface is acceptable)</p>
-------	------------------	--	---

7. 测试分组 Test Sequences (Samples: 5PCS)

测试组 GROUP NUMBER	A	B	C	D	E	F
外观 Appearance	1	1		1,5	1,5	1,3
插入力与拔出力 Insertion and Withdrawal Force	2					
压着部位抗张强度 Crimping Pull Out Force		2				
接触电阻 Low Level Contact Resistance				2,4	2,4	
温升 Temperature Rise			2			
恒定湿热 Humidity				3		
温度循环 Temperature Cycling					5	
盐雾 Salt Spray						2

产品名称 Product Name:	TR4.8×0.8R	编号 Document No.	PS3909	版本号 VersionNo.	3
-----------------------	------------	--------------------	--------	-------------------	---

General Tolerance				Dimension	Tolerance	Rev. No	Location	Description	Reviser	Date
	0~3	±0.13	1	H8	To update the content			Yang Pei	2019.01.23	
	3~18	±0.16								
	18~50	±0.31								
	≥50	±0.55								



Contact View
1:2

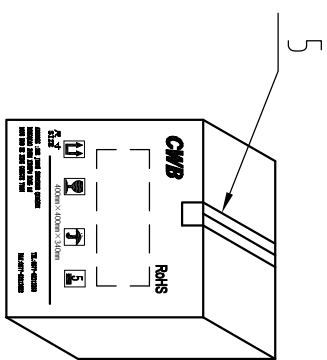
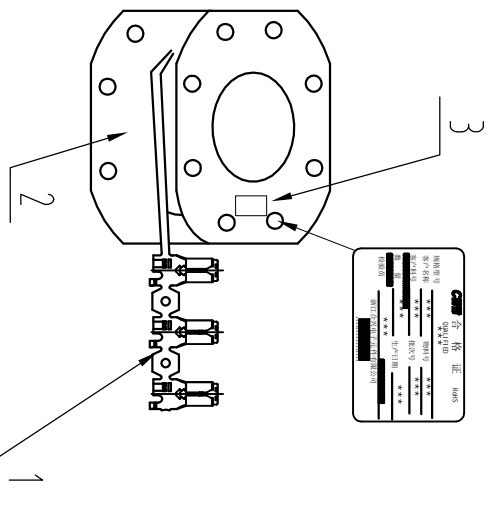
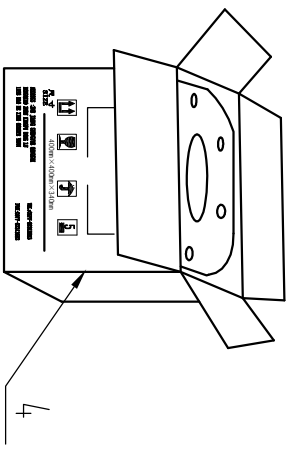
- Notes:
- 1.Material: Brass. Thickness=0.3mm;
 - 2.Surface Finish: Tin over Nickel Plating;
 - 3.Matched Tab: 4.8x0.8 tab;
 - 4.Applicable Wires: AWG20~AWG16;
 - 5.Compliant To The Current RoHS.

CUSTOMER DRAWING

Title: 4.8x0.8 flag type receptacle

Drawn	Liam	2016.06.27	Unit	mm	Scale	4:1	Size	A4	Edition	B	Part No.:	TR4.8x0.8R
Checked	Guoying Wang	2016.06.28	Sheet No.	1 of 1							Document No.:	CP-DWG-00103
Approved	Dongxu Wang	2016.06.28									Specification No.:	PS3909

Dimension	Tolerance	Rev. No	Location	Description	Reviser	Date
0-3	+0.13	△	D6	Change packing box	Li,Dim	2017.5.1
3-18	+0.16	△	H8	To update the content	Yang Pei	2009.07.23
18-50	+0.31					
≥50	+0.55					



Number	Designation	Remarks
1	TR4.8x0.8R flag type receptacle	5000pcs/reel
2	Packing reel	
3	Certificate	
4	Gummed tape	
5	Packing box	10000pcs/box

CUSTOMER DRAWING

Title:		Packaging Specification of 4.8x0.8 flag type receptacle	
Drawn	Li Dim 2016.06.27	Unit	mm
Checked	Guoying Wang 2017.06.01	Scale	/
Approved	Dongxuli Liu 2017.06.01	Size	A4
Sheet No. 1 of 1		Edition	B
Part No.: TR4.8x0.8R		Document No.:	BZ-DWG-00174
Specification No.:		PS3909	

