

产品描述: TR4.8A 系列直插型连接器

Product Description:TR4.8A Straight Type Receptacle

目录

INDEX

1. 更改履历 Change History
2. 范围 Scope
3. 产品描述 Product Description
4. 相关标准 Related Standards
5. 参数范围 Parameter Ratings
6. 产品性能 Performance
7. 测试分组 Test Sequences

 浙江合兴电子元件有限公司 CWB Electronics (Zhejiang) Co., Ltd.	制定 Edit: 杨培 2019.01.23	产品名称 Product Name: TR4.8A 系列
	审核 Check: 王国英 2019.01.23	编号 Document No.: PS3926
中国·浙江省乐清市虹桥镇幸福东路 1098 号 合兴工业园 1098,Xingfu `Road(East),CWB Industrial Zone,Hongqiao,Yueqing,Zhejiang 325608,China Tel: 86-577-61313157 Fax: 86-577-62313682	批准 Approval: 刘冬旭 2019.01.23	版本 REVISION: 3



产品规格书

PRODUCT SPECIFICATION

1 更改履历 Change History

序号 No.:	版本号 Version No.	更改前描述 Description Before Modification	更改后描述 Description After Modification	日期 Date
1	1	旧版规格书 PS0563/PS0798/PS1761/PS1785	新版规格书 PS3926	2016.09.20
2	2	/	按新标准更新部分参数	2017.4.12
3	3	/	更改图纸商标 LOGO	2019.01.23
4				
5				
6				
7				

产品名称 Product Name:	TR4.8A 系列	编号 Document No.	PS3926	版本号 VersionNo.	3
-----------------------	-----------	--------------------	--------	-------------------	---

2 适用范围 Scope

本产品规格书适用于浙江合兴电子元件有限公司生产的 TR4.8A 系列快速接插器和孔座，产品名称：[TR4.8A 系列直插型端子和护套,TJC47-nY](#)。

This product specification covers the requirements for [Receptacle Terminal and Housing](#), which is designed and manufactured by CWB Electronics(ZheJiang) Co.,LTD. P/N: [TR4.8A series straight type receptacles and jackets, TJC47-nY](#).

3 产品描述 Product Description

TR4.8A 系列产品为家电连接器产品，产品部件组成如下：

TR4.8A series of products for electrical products, product components are as follows:

Name	Part name	Notes
端子 Straight Type Receptacle	TR4.8×0.5A1	Brass, Tin over nickel plated
端子 Straight Type Receptacle	TR4.8×0.5A1-1	Brass, Tin over nickel plated
端子 Straight Type Receptacle	TR4.8×0.5A2	Brass, Tin over nickel plated
端子 Straight Type Receptacle	TR4.8×0.5A3	Brass, Tin over nickel plated
端子 Straight Type Receptacle	TR4.8×0.8A1	Brass, Tin over nickel plated
端子 Straight Type Receptacle	TR4.8×0.8A2	Brass, Tin over nickel plated
护套 Jacket	TR4.8A Jacket	PA66, UL94V-0
孔座 Housing	TJC47-nY	PC/PET, UL94V-0

4 相关标准 Related Standards

以下参考文件是本规格书的一个组成部份。若本规格书中的要求与产品图纸发生冲突，则产品图中的要求为优先；若本规格书中的要求与参考文件中的要求冲突，则本规格书为优先。

The following documents form a part of this specification. In the event of conflict between the requirements of this specification and the product drawing, the product drawing shall take precedence. In the event of conflict between the requirements of this specification and the referenced documents, this specification shall take precedence.

GB/T 2421	电工电子产品环境试验 第一部分 总则 Testing Method for Environmental of Electrical Connectors Class 1: General Principles
GB/T 2423	电工电子产品环境试验方法 Testing Method for Environmental of Electrical Connectors
GB/T 2424	电工电子产品环境试验导则 Testing Method for Environmental of Electrical Connectors
GB/T 5095	电子设备用机电元件基本试验规程及测量方法 Testing procedure/Method for components of electric equipment

产品符合合兴企标 Q/HX J1150001 《产品及所用材料的环保要求》 I 类或顾客要求。

The connector should comply with CWB standard Q/HX J1150001 Class I or customer's requests.

产品名称 Product Name:	TR4.8A 系列	编号 Document No.	PS3926	版本号 VersionNo.	3
-----------------------	-----------	--------------------	--------	-------------------	---

5 参数范围 Parameter Ratings:

额定电流 Rated Current	7A
额定电压 Rated Voltage	250V [AC(有效值 rms)/DC]
使用温度范围 Operating temperature range	-25°C~+85°C (Include temperature rise)
适用线型 Applicable wires	Wire Size: AWG 22~AWG 12 (0.33mm ² -3.3 mm ²) Insulation Diameter: 1.6mm-4.0mm

6 产品性能 Performance

6.1 机械性能 Mechanical

序号 No.	项 目 Item	测试条件 Test Condition	规 格 Requirement		
6.1.1	外观 Appearance	目测 Checking by eye 视力: 1.0 以上 Eyesight: > 1.0 照明: (200~300) lx Lamp: (200~300) lx 目测距离: (0.3~0.5) m Space: (0.3~0.5) m GB/T 5095.1 Method 1a	1 塑料件表面应无明显疤痕、凹陷、开裂及影响使用的变形, 按压塑件倒钩, 无损伤。 Plastic part: smooth and flat surface without discolor, broken, crack, and distortion, the hook can work when it is pressed. 2 金属件表面无锈蚀、氧化、无明显的机械损伤等缺陷。 Metal part: bright and even surface without rust, oxide, fog and obvious physical damage, etc.		
6.1.2	插簧与插片的 插拔力 Insertion and Withdrawal Force for Tab in Receptacle	固定插片(4.8×0.5)和/或测力计, 在连接器轴线方向插入和拔出; 速度25±3mm/min. Apply axial insert and withdraw on the tab (4.8×0.5) in the receptacle at a rate of 25±3 mm/min. GB/T 5095.7 Method 13b / EIA-364-13B	首次插入力 (First Insertion Force) Max	首次拔出力 (First Withdrawal Force) Min	六次拔出力 (6th Withdrawal Force) Min
			50N	13N	6.5N
6.1.3	端子固定力 Withdrawal Force for Receptacle in Housing	固定连接器和/或测力计, 在连接器轴线方向插入和拔出; 速度 25±3mm/min. Axial Insert and withdraw force on the receptacle in housing at a rate of 25±3 mm/min. GB/T 5095.8 Method 15d / EIA-364-29B	50N Min		

产品名称 Product Name:	TR4.8A 系列	编号 Document No.	PS3926	版本号 VersionNo.	3
-----------------------	-----------	--------------------	--------	-------------------	---



产品规格书

PRODUCT SPECIFICATION

6.1.4	压着部位抗张强度 Crimping Pull Out Force	<p>在试验装置夹头中固定试验样品，在连接的轴线方向施加张力，速度25±3mm/min；</p> <p>Fix the crimped receptacle, Axial pull out force on the receptacle in the wire at a rate of 25±3 mm/ min.</p> <p>GB/T5095.8 Method 16d / EIA-364-08B</p>	<p>AWG 22#: 40 N Min.</p> <p>AWG 20#: 60 N Min.</p> <p>AWG 18#: 89N Min.</p> <p>AWG 16#: 133.5N Min.</p> <p>AWG 14#: 222.5N Min.</p> <p>AWG 12#: 311.5N Min.</p>
6.1.5	机械振动 Vibration	<p>插合连接器，串联在一直流电源上,电流100mA；并模拟正常工作状态；振频为(10~55~10) Hz，每个循环时间为1分钟，振幅1.52mm。沿XYZ三轴正反方向各循环2h。</p> <p>Mated connectors subjected to following vibration conditions, for a period of 2 hours in each of 3 mutually perpendicular axes, 100 mA current shall be applied.</p> <p>Frequency: (10~55~10) HZ/min.</p> <p>Amplitude: 1.52mm</p> <p>GB/T 5095.4 Method 6d / EIA-364-28D</p>	<p>外观：无损伤（参照6.1.1）</p> <p>Appearance: No damage.(refer to 6.1.1)</p> <p>接触电阻：0.02Ω Max.</p> <p>Contact resistance: 0.02Ω Max.</p> <p>中断：1μsec Max.</p> <p><1μsec discontinuity</p>
6.1.6	机械寿命 Durability	<p>以每分钟 10 次的速度插拔 50 次。</p> <p>Mated up to 50 cycles repeatedly by the rate of 10 cycles/minutes</p> <p>GB/T 5095.5 Method 9a / EIA-364-09C</p>	<p>外观：无损伤（参照6.1.1）</p> <p>Appearance: No damage.(refer to 6.1.1)</p> <p>接触电阻：0.02Ω Max.</p> <p>Contact resistance: 0.02Ω Max.</p>

6.2 电气性能 Electrical

序号 No.	项 目 Item	测试条件 Test Condition	规 格 Requirement
6.2.1	接触电阻 Low Level Contact Resistance	<p>插入 4.8×0.5 插片,用小功率电路进行测试</p> <p>Insert and withdraw standard tab (4.8×0.5) and measure by dry circuit.</p> <p>GB/T 5095.2 Method 2a / EIA-364-23B</p>	<p>0.01 Ω Max. (Initial)</p> <p>0.02 Ω Max. (Final)</p>
6.2.2	绝缘电阻 Insulation Resistance	<p>在相邻接触件之间或地线之间,用 500V DC 电压进行测试。</p> <p>Apply a voltage of 500V DC between adjacent contacts and between contacts to ground.</p> <p>GB/T 5095.2 Method 3a / EIA-364-21C</p>	<p>1000 MΩ Min. (Initial)</p> <p>800 MΩ Min. (Final)</p>

产品名称 Product Name:	TR4.8A 系列	编号 Document No.	PS3926	版本号 VersionNo.	3
-----------------------	-----------	--------------------	--------	-------------------	---

6.2.3	耐电压 Withstand Voltage	相邻接触件之间或地线之间施加 2200V AC (有效值),漏电流 1mA 的电压作用,时间 1min. Apply a voltage of AC 2200V for 1 minute between adjacent contacts and between contacts to ground. GB/T 5095.2 Method 4a / EIA-364-20B	外观: 无击穿和飞弧现象 Appearance: No Breakdown or flashover
6.2.4	温升 Temperature Rise	插入连接器, 通以最大允许电流, 测温度的差值 Mated connectors and measure the temperature rise of contact when the maximum AC rated current is passed. GB/T 5095.3 Method 5a / EIA-364-70A	$\Delta 30^{\circ}\text{C Max.}$

6.3 环境性能 Environmental

序号 No.	项 目 Item	测试条件 Test Condition	规 格 Requirement
6.3.1	耐高温 Heat Resistance	连接器配合后, 于 $105\pm 2^{\circ}\text{C}$ 的空气中放置 96 小时, 再回到室温中放置 1-2 小时测定. Mated connectors exposed to the condition of $105\pm 2^{\circ}\text{C}$ for 96 hours. Recovery time 1~2 hours GB/T 5095.6 Method 11i / EIA-364-17B	外观: 无损伤 (参照6.1.1) Appearance: No damage.(refer to 6.1.1) 接触电阻: $0.02\Omega \text{ Max.}$ Contact resistance: $0.02\Omega \text{ Max.}$
6.3.2	恒定湿热 Humidity	温度 $40\pm 2^{\circ}\text{C}$, 相对湿度(90~95)% 搁置时间 96h, 取出恢复 1~2h 后检查. Mated connectors exposed to the condition of $40\pm 2^{\circ}\text{C}$ (90~95) % Humidity for 96 hours. Recovery time 1~2 hours GB/T 5095.6 Method 11c /EIA-364-31B	外观: 无损伤 (参照6.1.1) Appearance: No damage.(refer to 6.1.1) 接触电阻: $0.02\Omega \text{ Max.}$ Contact resistance: $0.02\Omega \text{ Max.}$ 绝缘电阻: $800 \text{ M}\Omega \text{ Min.}$ Insulation Resistance : $800 \text{ M}\Omega \text{ Min.}$ 耐电压: 无击穿和飞弧现象 Withstand Voltage: No Breakdown or flashover

产品名称 Product Name:	TR4.8A 系列	编号 Document No.	PS3926	版本号 VersionNo.	3
-----------------------	-----------	--------------------	--------	-------------------	---

6.3.3	温度循环 Temperature Cycling	<p>把试验样品分别放入高、低温试验箱中，按下列步骤调试温度：</p> <p>a) 在(-55±2)°C的恒温条件下放置 0.5h；</p> <p>b) 在(85±2)°C的恒温条件下放置 0.5h；</p> <p>从 a)到 b)为一个循环周期，共进行 5 个循环,恢复 1~2h 后检查。</p> <p>Mated connectors shall be tested under the following conditions</p> <table border="1"> <thead> <tr> <th>Temperature °C</th> <th>Duration (Minutes)</th> </tr> </thead> <tbody> <tr> <td>1 -55</td> <td>30</td> </tr> <tr> <td>2 +25</td> <td>5Max.</td> </tr> <tr> <td>3 +85</td> <td>30</td> </tr> <tr> <td>4 +25</td> <td>5Max.</td> </tr> </tbody> </table> <p>Step 1 to 4 is one cycle, 5 cycles shall be tested.</p> <p>Recovery time 1~2 hours.</p> <p>GB/T 5095.6 method 11d / EIA-364-32C</p>	Temperature °C	Duration (Minutes)	1 -55	30	2 +25	5Max.	3 +85	30	4 +25	5Max.	<p>外观：无损伤（参照6.1.1）</p> <p>Appearance: No damage.(refer to 6.1.1)</p> <p>接触电阻：0.02Ω Max.</p> <p>Contact resistance: 0.02Ω Max.</p> <p>绝缘电阻：800 MΩ Min.</p> <p>Insulation Resistance : 800 MΩ Min.</p> <p>耐电压：无击穿和飞弧现象</p> <p>Withstand Voltage: No Breakdown or flashover</p>
Temperature °C	Duration (Minutes)												
1 -55	30												
2 +25	5Max.												
3 +85	30												
4 +25	5Max.												
6.3.4	盐雾 Salt Spray	<p>把试验样品从试验箱顶悬挂下来，采用浓度为(5±1)%(质量百分比)的氯化钠溶液，在(35±2)°C温度下连续雾化 48h,试验后用流动的蒸馏水轻轻洗去表面沉积物。在常温常湿条件下恢复 1~2h</p> <p>48 hours spray, at temp (35±2)°C, Salt NaCl mist (5±1)% After test wash parts and return to room temperature for 1~2 hours</p> <p>GB/T 5095.6 Method 11f / EIA-364-26B</p>	<p>外观：无损伤(五金件应无露出底金属的严重锈蚀;使用预镀好的型材，其落料面允许有不影响其性能的轻微腐蚀。)</p> <p>Appearance: No Damage (No erosion with material exposed. And with plating material, slight erosion on the cutting surface is acceptable)</p> <p>接触电阻：0.02Ω Max.</p> <p>Contact resistance: 0.02Ω Max.</p>										

产品名称 Product Name:	TR4.8A 系列	编号 Document No.	PS3926	版本号 VersionNo.	3
-----------------------	-----------	--------------------	--------	-------------------	---



产品规格书

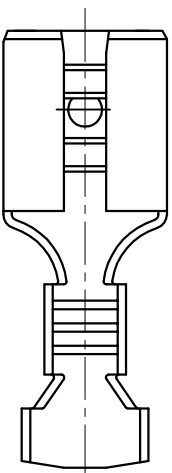
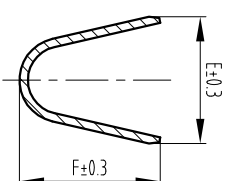
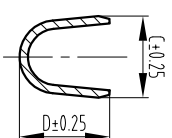
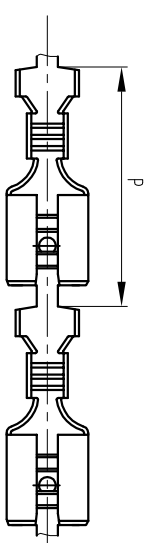
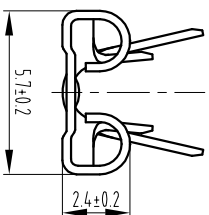
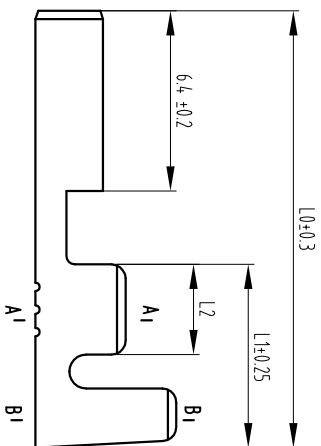
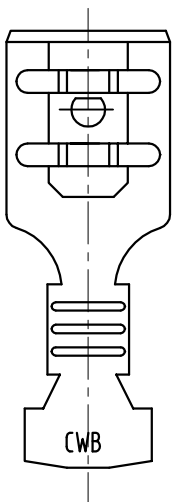
PRODUCT SPECIFICATION

7.测试分组 Test Sequences (Samples: 5PCS)

测试组 GROUP NUMBER	A	B	C	D	E	F	G	H	I	J	K
外观 Appearance	1	1	1	1	1	1,4	1	1,3	1,7	1,7	1
插簧与插片的插拔力 Insertion and Withdrawal Force for Tab in Receptacle	2										
端子固定力 Withdrawal Force for Receptacle in Housing		2									
压着部位抗张强度 Crimping Pull Out Force			2								
机械振动 Vibration				3							
机械寿命 Durability					3						
接触电阻 Low Level Contact Resistance				2,4	2,4			2,4	2,4	2,4	2,4
绝缘电阻 Insulation Resistance						2			5	5	
耐电压 Withstand Voltage						3			6	6	
温升 Temperature Rise							2				
耐高温 Heat Resistance								3			
恒定湿热 Humidity									3		
温度循环 Temperature Cycling										3	
盐雾 Salt Spray											3

产品名称 Product Name:	TR4.8A 系列	编号 Document No.	PS3926	版本号 VersionNo.	3
-----------------------	-----------	--------------------	--------	-------------------	---

General Tolerance		Dimension	Tolerance	Rev. No	Location	Description	Reviser	Date
	0~3	±0.13	/		Standardization of drawings	Li:Qin	2017.4.12	
	3~18	±0.16	1	H8	To update the content	Yang Pei	2019.01.23	
	18~50	±0.31						
	≥50	±0.55						



- Notes:
- 1.Material: Brass;
 - 2.Surface Finish: Tin over nickel plated;
 - 3.Matched Tab: 4,8×0.5 series tabs;
 - 4.Matched Housing: TR4,8A Jacket, TJC47-NY;
 - 5.Compliant To The Current RoHS.

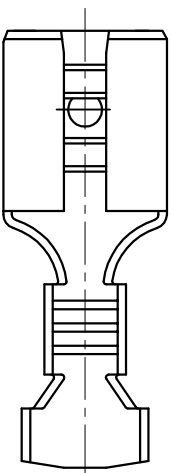
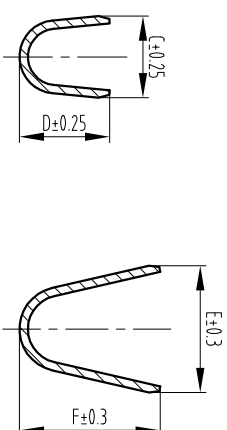
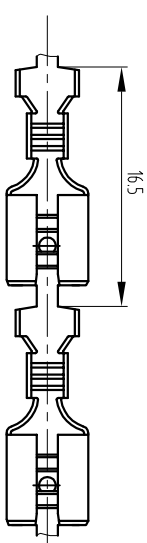
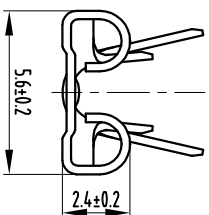
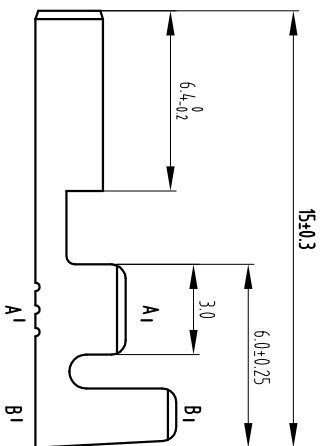
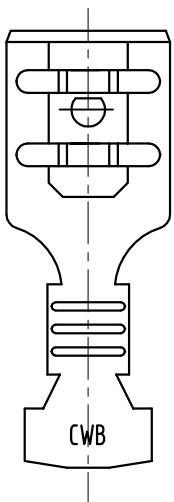
Part No.	Applicable Wires	Dimensions									
		C	D	E	F	L0	L1	L2	P		
TR4,8×0.5A3	AWG16+AWG22 or AWG16+AWG20 AWG20+AWG18 or AWG18+AWG22 2×AWG20 or 2×AWG18	4.4	3.9	8	6.5	19.5	10.0	4.2	21		
TR4,8×0.5A2	AWG18~AWG14	3.0	3.3	5.2	5.1	15.0	6.5	3.2	16.5		
TR4,8×0.5A1-1	AWG22~AWG18	2.8	3.1	4.6	5.0	15.0	6.1	3.2	16.5		
TR4,8×0.5A1	AWG22~AWG18	2.9	3.2	4.5	5.0	15.5	6.5	3.2	17		

CUSTOMER DRAWING

Title:
4,8×0.5 Straight Type
Receptacle

Drawn	Li:Qin	2016.09.20	Unit	mm	Scale	4:1	Size	A4	Edition	B	Part No.:	TR4,8×0.5A Series
Checked	Guojing Wang	2017.4.12	Sheet No.			1 OF 1					Document No.:	CP-DWG-00356
Approved	Dongxuliu	2017.4.12									Specification No.:	PS3926

General Tolerance		Dimension	Tolerance	Rev. No	Location	Description	Reviser	Date
	0~3	±0.13	/	△	Standardization of drawings	Li Qin	2017.4.12	
	3~18	±0.16	1	H8	To update the content	Yang Pei	2019.01.23	
	18~50	±0.31						
	≥50	±0.55						



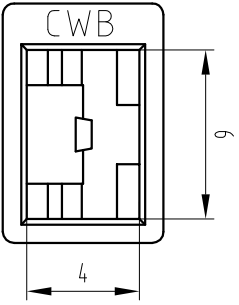
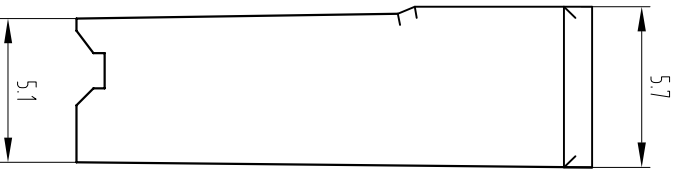
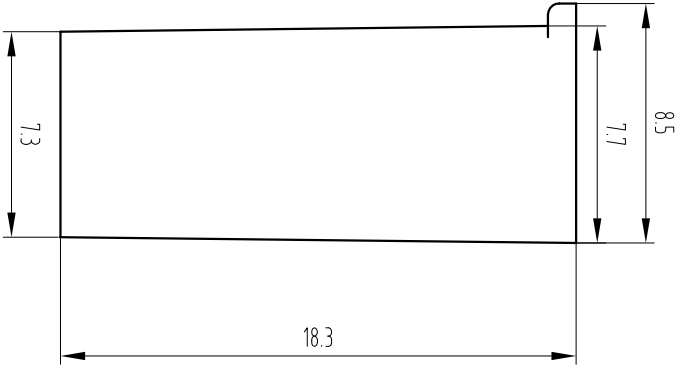
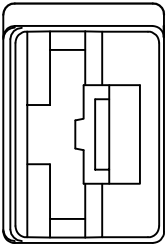
- Notes:
1. Material: Brass;
 2. Surface Finish: Tin over nickel plated;
 3. Matched Tab: 4.8×0.8 series tabs;
 4. Matched Housing: TR4.8A Jacket, TJC47-nY;
 5. Compliant To The Current RoHS.

Part No.	Applicable Wires	Dimension				
TR4.8×0.8A2	AWG18~AWG14	3.0	3.3	5.2	5.1	
TR4.8×0.8A1	AWG22~AWG18	2.6	2.8	4.1	4.2	
		C	D	E	F	

CUSTOMER DRAWING				Title:	
Drawn	Li Qin	2016.09.20	Unit	Scale	Size
Checked	Guoying Wang	2017.4.12	mm	4:1	A4
Approved	Dongxuliu	2017.4.12	Sheet No.	1 OF 1	B
			Edition		
			Part No.:		TR4.8×0.8A Series
			Document No.:		CP-DWG-00357
			Specification No.:		PS3926

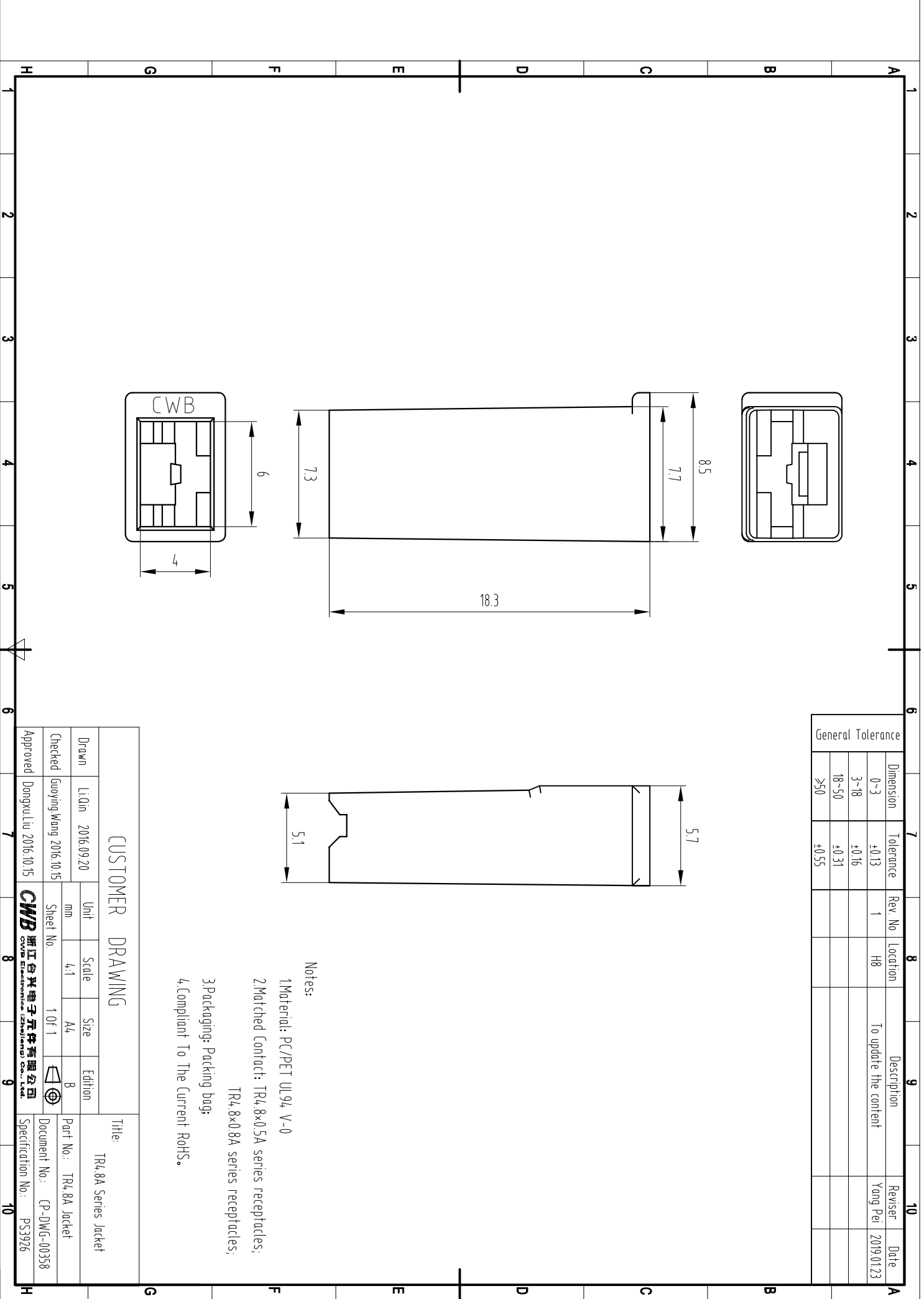
CWB 浙江谷兴电子有限公司
GVAE ELECTRONICS (SHANGHAI) CO., LTD.

General Tolerance			
Dimension	Tolerance	Rev. No	Location
0~3	±0.13	1	H8
3~18	±0.16		
18~50	±0.31		
≥50	±0.55		

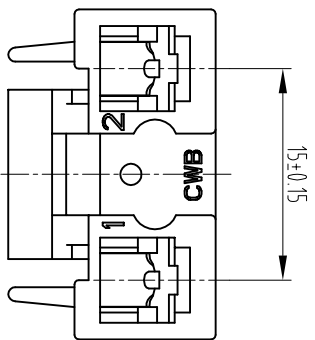
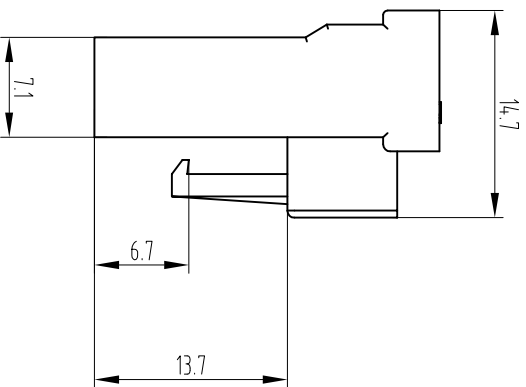
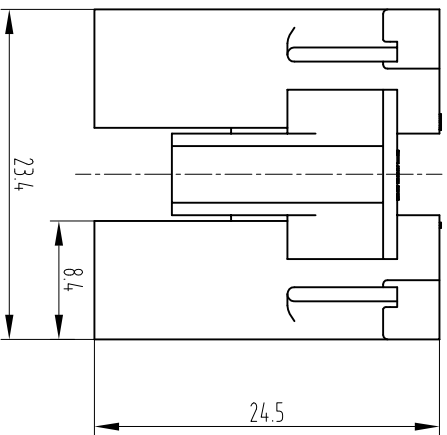


- Notes:
- 1.Material: PC/PET UL94 V-0
 - 2.Matched Contact: TR4.8x0.5A series receptacles; TR4.8x0.8A series receptacles;
 - 3.Packaging: Packing bag;
 - 4.Compliant To The Current RoHS.

CUSTOMER DRAWING				Title:	
Drawn	Li Qin 2016/09/20	Unit	mm	Scale	4:1
Checked	Guoying Wang 2016/10/15	Sheet No.	1 OF 1	Size	A4
Approved	Dongxuli Liu 2016/10/15	Edition	B	Part No.:	TR4.8A Jacket
CWB 浙江台兴电子元件有限公司 CWB Electronics (Zhejiang) Co., Ltd.				Document No.:	CP-DWG-00358
				Specification No.:	PS3926




General Tolerance				7	8	9	10
Dimension	Tolerance	Rev. No	Location	Description	Reviser	Date	
0~3	±0.13	1	H8	To update the content	Yang Pei	2019.01.23	
3~18	±0.16						
18~50	±0.31						
≥50	±0.55						

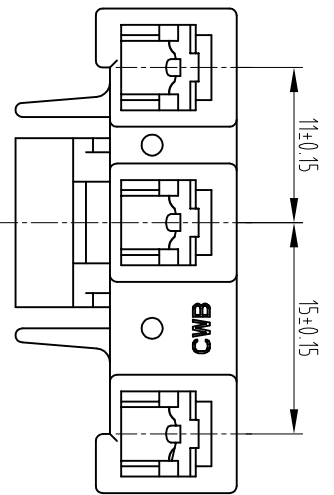
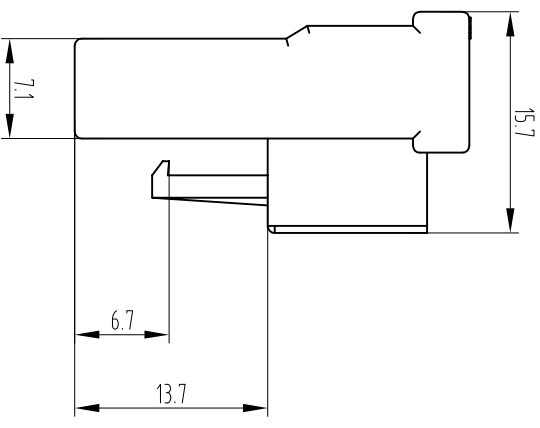
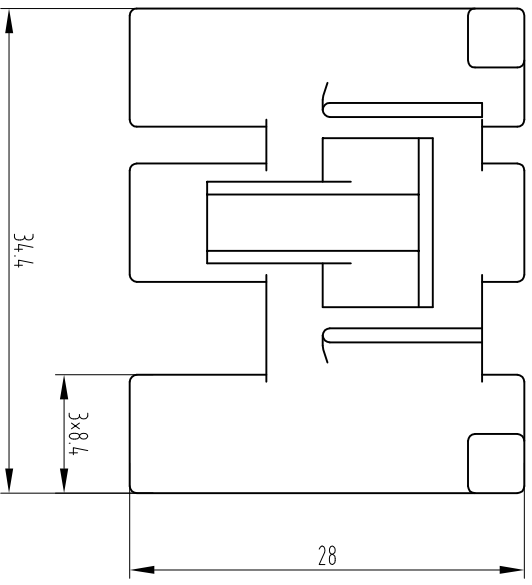


Notes:

- 1 Material: PC/PET UL94 V-0
- 2 Matched Contact: TR4.8A series receptacles;
- 3 Packaging: Packing bag;
- 4 Compliant To The Current RoHS.

CUSTOMER DRAWING				Title: TR4.8A series Housing			
Drawn	Liam 2016.09.20	Unit	mm	Scale	2:1	Size	A4
Checked	Guojing Wang 2016.10.15	Sheet No.	1 of 1	Edition	B	Part No.:	TJCL7-2Y
Approved	Dongxulu 2016.10.15	 CWB 浙江合兴电子元件有限公司 CWB Electronics (Zhejiang) Co., Ltd.		Document No.:	CP-DWG-00359	Specification No.:	PS3926

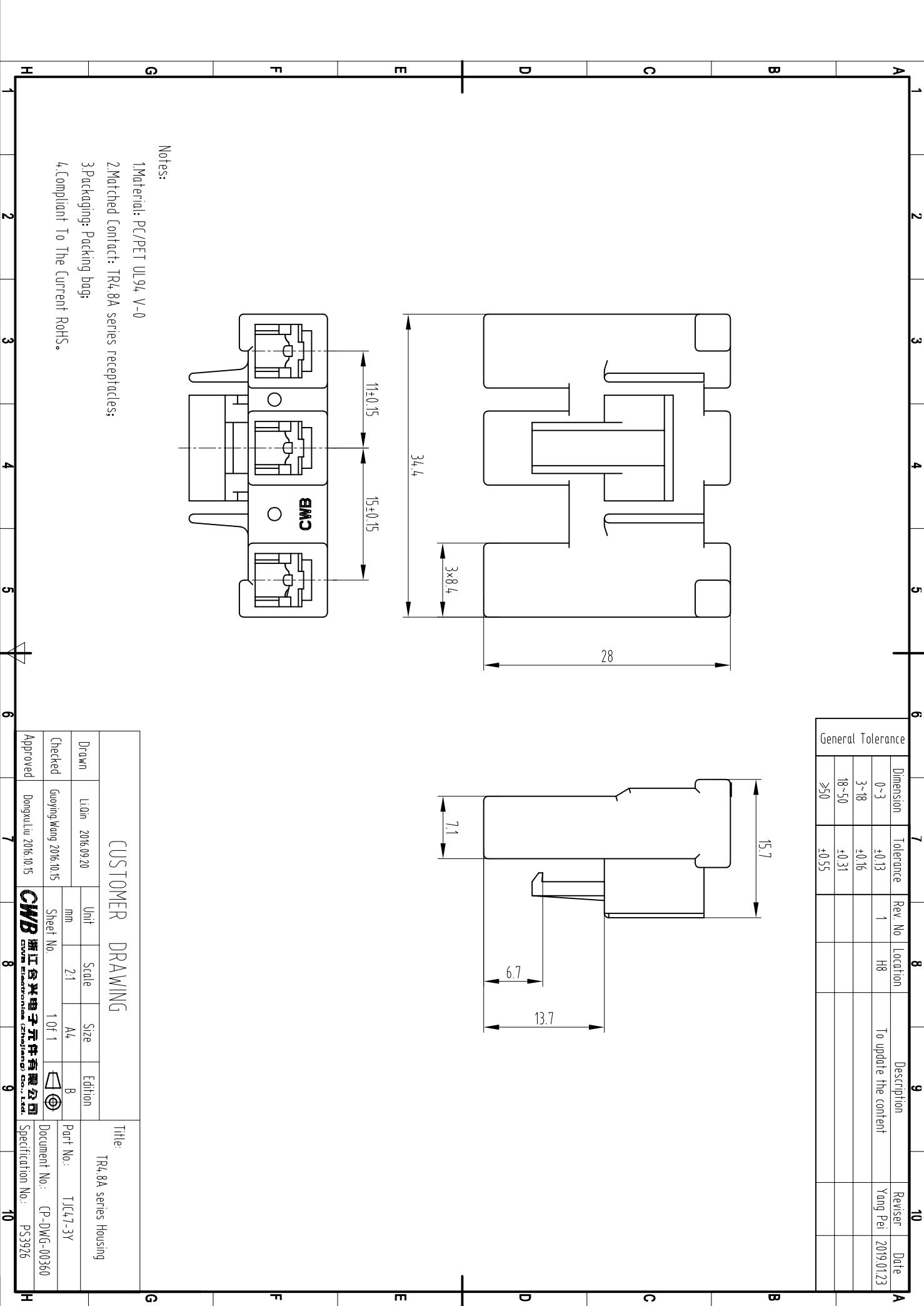
General Tolerance		Dimension	Tolerance	Rev. No	Location	Description	Reviser	Date
	0~3	± 0.13	1	H8	To update the content	Yang Pei	2019.01.23	
	3~18	± 0.16						
	18~50	± 0.31						
	≥ 50	± 0.55						



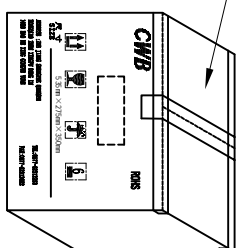
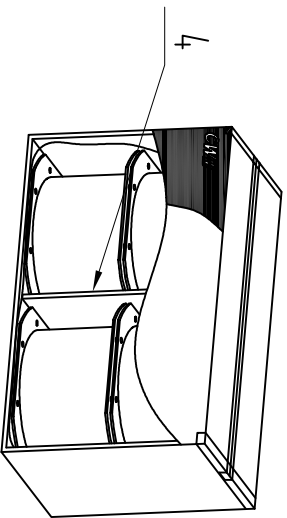
Notes:

- 1 Material: PC/PET UL94 V-0
- 2 Matched Contact: TR4.8A series receptacles;
- 3 Packaging: Packing bag;
- 4 Compliant To The Current RoHS.

CUSTOMER DRAWING				Title:	
Drawn	Liam 2016.09.20	Unit	mm	Scale	2:1
Checked	Guoying Wang 2016.10.15	Sheet No.	1 OF 1	Size	A4
Approved	Dongxuli 2016.10.15	Edition	B	Part No.:	TJL47-3Y
				Document No.:	CP-DWG-00360
				Specification No.:	PC3926



General Tolerance		Dimension	Tolerance	Rev. No	Location	Description	Reviser	Date
	0~3	±0.13	1	H8	To update the content	Yang Pei	2019.01.23	
	3~18	±0.16						
	18~50	±0.31						
	≥50	±0.55						



CMB 合格证书
 规格型号: TR4.8A
 客户名称: *****
 零件名称: *****
 数量: *****
 日期: *****
 浙江中控电子元件有限公司

Number	Designation	Part No.	Pcs/reel	Pcs/box
5	Packing box	TR4.8-0.8A2	5000	20000
4	Protective barrier	TR4.8-0.8A1	10000	40000
3	Certificate	TR4.8-0.5A3	4000	6000
2	Packing reel	TR4.8-0.5A2	10000	40000
1	TR4.8A series receptacle	TR4.8-0.5A1-1	10000	40000
		TR4.8-0.5A1	10000	40000

CUSTOMER DRAWING

Drawn		L10m 2016.09.20		Unit	Scale	Size	Edition	Title:	
Checked		Guoying Wang 2016.10.15		mm	/	A4	B	Packaging Specification of TR4.8A Straight Type Receptacle	
Approved		Dongxu Liu 2016.10.15		Sheet No.	1 OF 1		Part No.: TR4.8A series Receptacle		
				CMB 浙江中控电子元件有限公司		Document No.: BZ-DWG-00204		Specification No.: PS3926	

