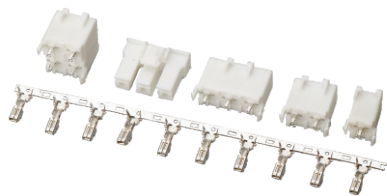


TJC80001 型条形连接器

TJC80001 Bar Connector

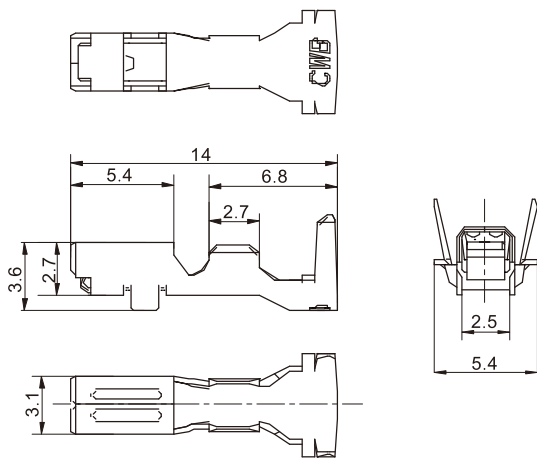
间距 (space) :8.0mm

技术参数 (Specifications)



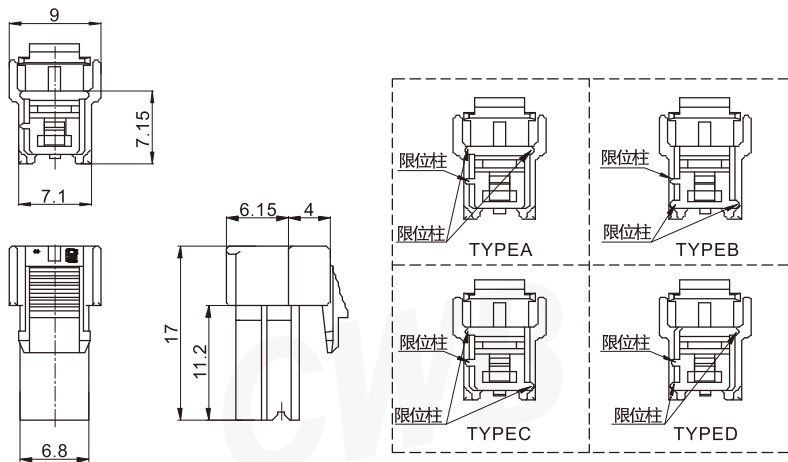
适用线规 (Applicable wires) : AWG#22~AWG#18
 温度范围 (Temperature range) : -25℃~85℃
 额定电压 (Voltage rating) : 250V AC/DC
 额定电流 (Current rating) : 8A
 接触电阻 (Contact resistance) : $\leq 20m\Omega$
 绝缘电阻 (Insulation resistance) : $\geq 1000M\Omega$
 耐压 (Withstand voltage) : 1500V AC/minute

插簧 Contact



型号 Type	适用导线范围 Wire Range		导线外径 Wire ins.Dis
	mm ²	AWG#	
CH-TJC80001	0.33~0.83	22~18	1.75~3.1
材质·表面处理 Material and Finish			
磷青铜 镀锡 Phos·bronze Tin·Plated			

孔座 Housing



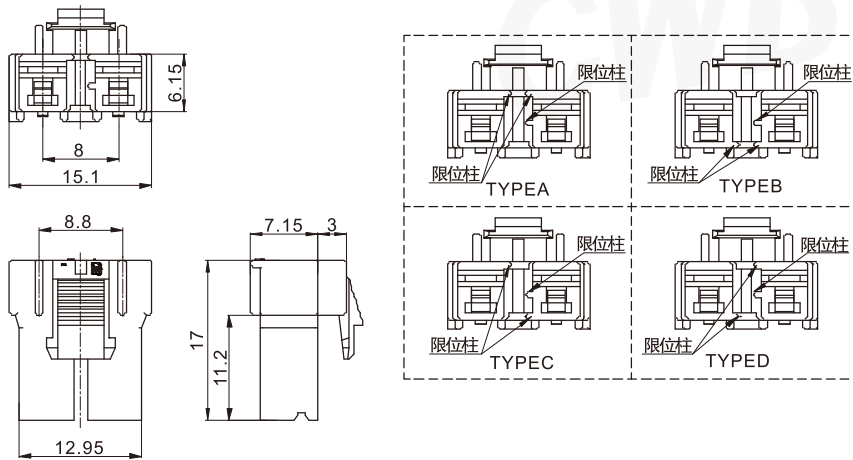
线数 Poles	型号 Type	
1	TYPE A	TJC80001-1Y WT
1	TYPE B	TJC80001-1Y RD
1	TYPE C	TJC80001-1Y BL
1	TYPE D	TJC80001-1Y YW
材质 Material PA66 UL94V-0		

TJC80001 型条形连接器

TJC80001 Bar Connector

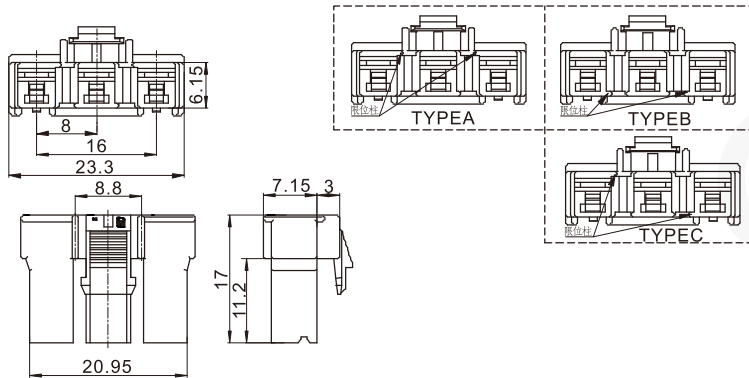
间距 (space) :8.0mm

孔座 Housing



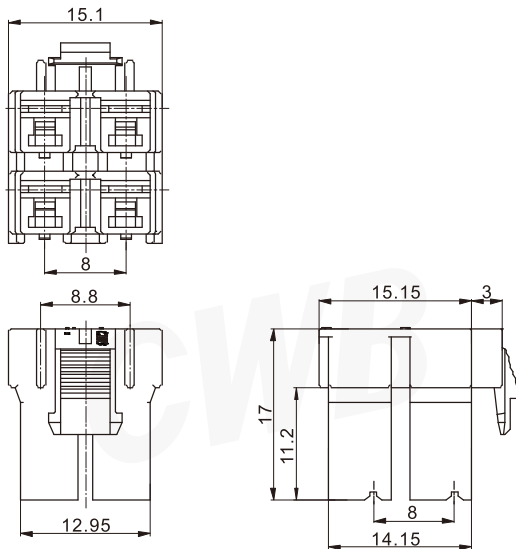
线数 Poles	型号 Type	
2	TYPE A	TJC80001-2Y WT
2	TYPE B	TJC80001-2Y RD
2	TYPE C	TJC80001-2Y BL
2	TYPE D	TJC80001-2Y GY
材质 Material		PA66 UL94V-0

孔座 Housing



线数 Poles	型号 Type	
3	TYPE A	TJC80001-3Y WT
3	TYPE B	TJC80001-3Y RD
3	TYPE C	TJC80001-3Y BL
材质 Material		PA66 UL94V-0

孔座 Housing



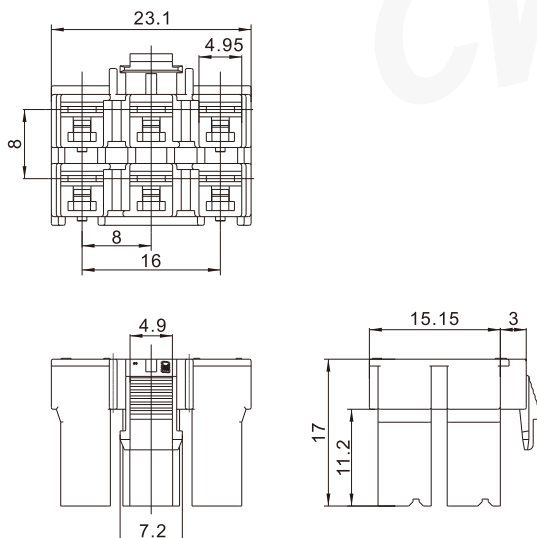
线数 Poles	型号 Type
4	TJC80001-4Y WT
材质 Material	
PA66 UL94V-0	

TJC80001 型条形连接器

TJC80001 Bar Connector

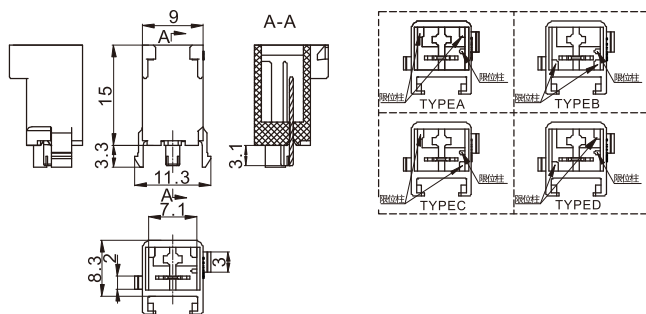
间距 (space) :8.0mm

孔座 Housing



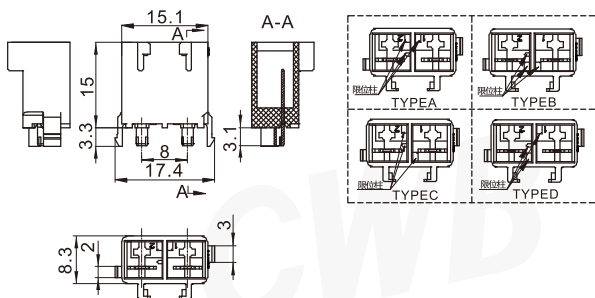
线数 Poles	型号 Type
6	TJC80001-6Y WT
材质 Material	PA66 UL94V-0

阳连接器 (立式, 直插, 含定位柱) Header (V, DIP, W/Boss)



线数 Poles	型号 Type	
1	TYPE A	TJC80001-1A WT
1	TYPE B	TJC80001-1A RD
1	TYPE C	TJC80001-1A BL
1	TYPE D	TJC80001-1A GY
材质 · 表面处理 Material and Finish		
PA66 UL94V-0; 黄铜 镀锡 Brass Tin · Plated		

阳连接器 (立式, 直插, 含定位柱) Header (V, DIP, W/Boss)



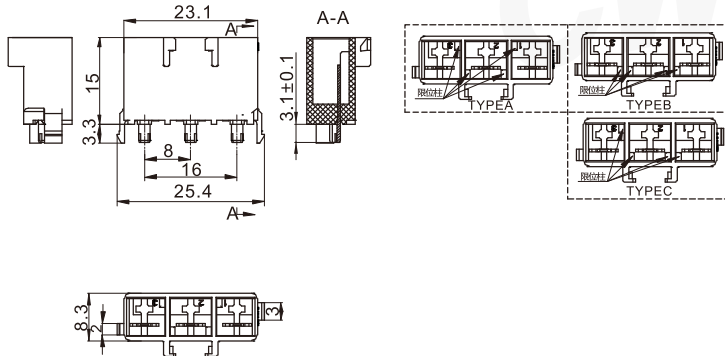
线数 Poles	型号 Type	
2	TYPE A	TJC80001-2A WT
2	TYPE B	TJC80001-2A RD
2	TYPE C	TJC80001-2A BL
2	TYPE D	TJC80001-2A GY
材质 · 表面处理 Material and Finish		
PA66 UL94V-0; 黄铜 镀锡 Brass Tin · Plated		

TJC80001 型条形连接器

TJC80001 Bar Connector

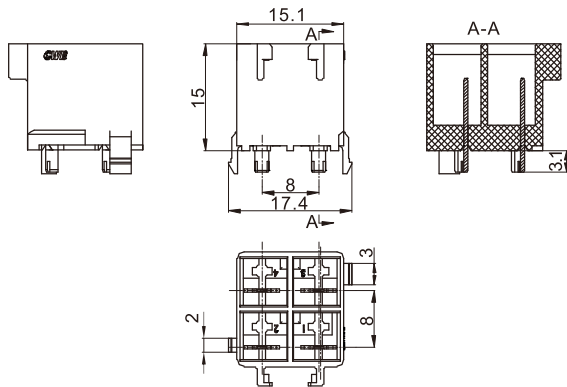
间距 (space) :8.0mm

阳连接器 (立式, 直插, 含定位柱) Header (V, DIP, W/Boss)



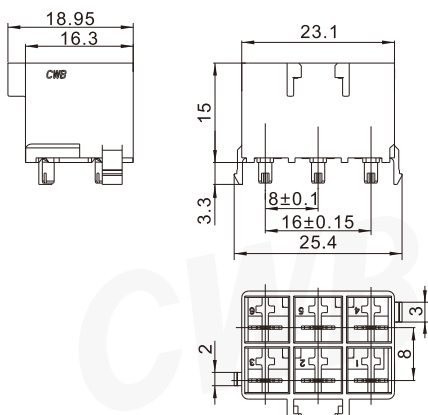
线数 Poles	型号 Type	
3	TYPE A	TJC80001-3A WT
3	TYPE B	TJC80001-3A RD
3	TYPE C	TJC80001-3A BL
材质 · 表面处理 Material and Finish		
PA66 UL94V-0; 黄铜 镀锡 Brass Tin · Plated		

阳连接器 (立式, 直插, 含定位柱) Header (V, DIP, W/Boss)



线数 Poles	型号 Type
4	TJC80001-4A WT
材质 · 表面处理 Material and Finish	
PA66 UL94V-0; 黄铜 镀锡 Brass Tin · Plated	

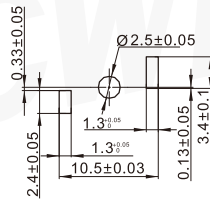
阳连接器 (立式, 直插, 含定位柱) Header (V, DIP, W/Boss)



线数 Poles	型号 Type
6	TJC80001-6A
材质 · 表面处理 Material and Finish	
PA66 UL94V-0; 黄铜 镀锡 Brass Tin · Plated	

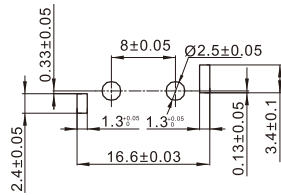
安装尺寸 Mounting Measurement

TJC80001-1A



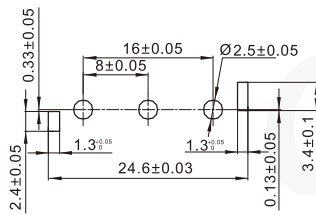
PCB Layout

TJC80001-2A



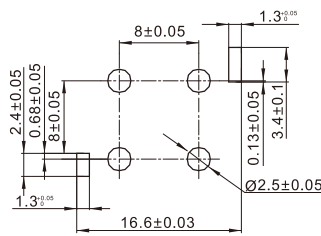
PCB Layout

TJC80001-3A



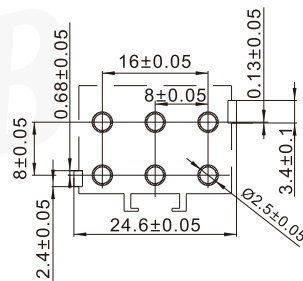
PCB Layout

TJC80001-4A



PCB Layout

TJC80001-6A



PCB Layout